

WELCOME TO YEAR 1

Teachers

Mrs Khosa

Miss Patel

Learning Support Assistants

Mrs Ahmed

Mrs Punia

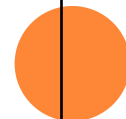
WELCOME

- This morning we hope to inform you a little more about the Year 1 curriculum and routines.
- If you have any questions, please feel free to ask at the end of the session.



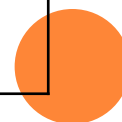
YEAR 1DK GURU NANAK ACADEMY PRIMARY PHASE 2019-2020

Day / Time	8:30-40		8:45 9:15 30 mins	9:15 – 9.40	9.45 – 10.15 30mins	10:15 – 30	10:30 – 11:30 1 hour	11.30 – 12:30	12.30 - 12:40	1 hour 12:40 – 1:40	1:45 – 2:00	2:00 – 3:00 1 hour
Monday	Registration	Assembly – Intervention		Phonics	Guided Reading	Break	Literacy	Lunch	Registration	Maths	Break	Science
Tuesday	Registration	Assembly – Intervention		Phonics	English	Break	Maths	Lunch	Registration	PPA Punjabi/Sikh studies	Break	PPA Computing
Wednesday	Registration	PSHE		Phonics	Guided Reading	Break	English	Lunch	Registration	Maths	Break	Art/DT
Thursday	Registration	Assembly		Music	Guided Reading	Break	English	Lunch	Registration	Maths	Break	History/Geog
Friday	Registration	Cert assembly		Library	Spelling and Mental Maths Test	Break	English JL	Lunch	Registration	Maths JL	Break	PE INSIDE/OUT



YEAR 1SP GURU NANAK ACADEMY PRIMARY PHASE 2019-2020

Day / Time	8:30-40		8:45 - 9:15 30 mins	9:15 – 9:40	9.45 – 10.15 30mins	10:15 – 30	10:30 – 11:30 1 hour	11.30 – 12:30	12:30 - 12: 40	1 hour 12:40 – 1:40	1:45 – 2:00	2:00 – 3:00 1 hour	
Monday	Registration	Assembly – Intervention		Phonics	Guided Reading	Break	English	Lunch	Registration	Maths	Break	Science	
Tuesday	Registration	Assembly – Intervention		Phonics	English	Break	Maths	Lunch	Registration	PPA Computing	Break	PPA Punjabi/Sikh studies	
Wednesday	Registration	PSHE		Phonics	Guided Reading	Break	English	Lunch	Registration	Maths	Break	PE INSIDE/OUT	
Thursday	Registration	Assembly		English		Break	Guided Reading	Music	Lunch	Registration	Maths	Break	History/Goeg
Friday	Registration	Cert assembly		Spelling and Mental Maths Test	Library	Break	English	Lunch	Registration	Maths	Break	Art/DT	



YEAR 1 – DAILY ROUTINES

- Students are expected to be lined up in the playground at 8.20am, we would request parents to leave their child in the line and move away.
- At the end of the day students will be dismissed from the classroom.
- Mobile phones – please refrain from using mobiles when dropping and collecting your child.
- If someone else is collecting your child you **must** inform the school office prior to collection.



YEAR 1 – DAILY ROUTINES

- We expect all students in full school uniform every day; should your child be missing a part of their uniform please let the class teacher know and replace it as soon as possible.
- Please note black trainers are not part of the uniform.
- Please ensure that each item is clearly labelled with your child's name and class.
- Water bottles- Please ensure that you provide your child with a water bottle daily and ensure it is clearly labelled.



YEAR 1– DAILY ROUTINES

- Homework- given on Friday. Due in on TUESDAY. Please ensure it is completed in full.
- Reading books- given on Friday and due back on the following THURSDAY. Please read with your child everyday and ensure you sign the reading record book.
- Spellings and Mental Maths books are given out on Friday. Children will be tested the following FRIDAY.
- Library books- library slot is on FRIDAY
- Home school diaries – If you have any comments, please write them in the diaries.



ONLINE HOMEWORK

The school has invested in;

- - Manga High - Maths
- - Bug Club – Reading

Also, free websites to support your child's learning

- - Oxford Owl – Phonics

If your child is **unable** to access these learning resources, please let the class teacher know so we can arrange for them to use them in school.



PHONICS SCREENING CHECK

- **Phonics is a very important aspect of the Year 1 curriculum as all Year 1 children undergo phonics screening in the Summer Term.**

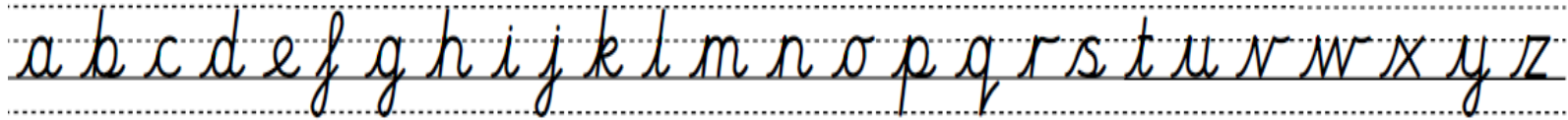
- Children will read a collection of 40 real and “nonsense” words.
- Children will be assessed on their ability to correctly pronounce these words.
- Words are given to the school on the week of the test and are different each year.
- If children do not reach the required pass mark they will retake the test in Year 2.

 ect	 shog
 jat	 stip
 yod	 bulm
 keb	 quock
 toin	 voisk

CURRICULUM - WRITING

By the end of the year your child should be confident with :

- Letter formation - writing their letters correctly (including ascenders, descenders, upper and lower case).
- Children are taught cursive handwriting in Year 1.



- Connectives – extending simple sentences (using ‘and’ and ‘because’).
- Using capital letters, full stops, question and exclamation marks.
- Common Exception words – read, write and spell the 44 words.



CURRICULUM- READING

- Reading books- please sign the reading record.
- Library books- library slot Friday.
- Guided reading – is done every week to teach reading with understanding using the Reading VIPERS.
- Benchmarking is a reading assessment that is carried out 3 times a year to assess comprehension as well as fluency.



CURRICULUM- MATHS

- Number formation,
- Number bonds,
- Addition and subtraction,
- Counting forwards and backwards,
- Order and value of numbers,
- Properties of different shapes,



PUPIL PREMIUM

If you receive any of the following, the school may be entitled to receive funds on your child's behalf.

Please complete the online eligibility check if you are in receipt of any of the following:

- *Income Support*
- *Income-based Jobseekers Allowance*
- *Support under part VI of the Immigration and Asylum Act 1999*
- *The guaranteed element of the State Pension Credit*
- *Child Tax Credit (provided you're not also entitled to Working Tax Credit and have an annual gross income of no more than £16, 190)*
- *Working Tax Credit run on- paid for 4 weeks after you stop qualifying for Working Tax Credit Universal Credit.*

PUPIL PREMIUM- WHAT IS THE FUNDING USED FOR?

- **To provide extra training for staff.**
- **To set up booster classes for pupils.**
- **To invest in resources to further pupil's progress.**
- **Ultimately, to further pupil's education and achievement.**

Please take a step by step guide explaining how to complete the check before you leave.

OTHER INFORMATION

- Parent consultation will be on Tuesday 15th & Wednesday 16th October 2019.
- Curriculum maps will be available on the website.
- We will be holding parent workshops throughout the year; more information for these will be sent out at a later date.
- Please ensure you are set up on School Gateway as this is the preferred channel of communication.



LOOKING AHEAD 2019/20

- We are sure that your child will have a positive and productive year in Year 1 and we look forward to working with you to ensure this.
- If, for any reason, you have any issues or difficulties please raise them directly with your child's class teacher.
- If you feel the issue has not been resolved then please contact the Year Team Leader.
- Lastly, please ask for a member of the Senior Leadership Team, where either Miss O'Leary or Mrs Dhaliwal will contact you.



- Are there any questions?

